

**(DANRE) edc3 Antibody (Center)**  
**Purified Rabbit Polyclonal Antibody (Pab)**  
**Catalog # Azb18719a**

**Specification**

---

**(DANRE) edc3 Antibody (Center) - Product Information**

Application	WB,E
Primary Accession	<a href="#">Q502M5</a>
Reactivity	Zebrafish
Host	Rabbit
Clonality	Polyclonal
Isotype	Rabbit IgG
Calculated MW	54852
Antigen Region	162-197

**(DANRE) edc3 Antibody (Center) - Additional Information**

**Other Names**

Enhancer of mRNA-decapping protein 3, LSM16 protein homolog, YjeF domain-containing protein 1, edc3, lsm16, yjdc

**Target/Specificity**

This (DANRE) edc3 antibody is generated from a rabbit immunized with a KLH conjugated synthetic peptide between 162-197 amino acids from the Central region of (DANRE) edc3.

**Dilution**

WB~~1:1000

E~~Use at an assay dependent concentration.

**Format**

Purified polyclonal antibody supplied in PBS with 0.09% (W/V) sodium azide. This antibody is purified through a protein A column, followed by peptide affinity purification.

**Storage**

Maintain refrigerated at 2-8°C for up to 2 weeks. For long term storage store at -20°C in small aliquots to prevent freeze-thaw cycles.

**Precautions**

(DANRE) edc3 Antibody (Center) is for research use only and not for use in diagnostic or therapeutic procedures.

**(DANRE) edc3 Antibody (Center) - Protein Information**

**Name** edc3

**Synonyms** lsm16, yjdc

**Function** Binds single-stranded RNA. Involved in the process of mRNA degradation and in the

positive regulation of mRNA decapping (By similarity).

#### Cellular Location

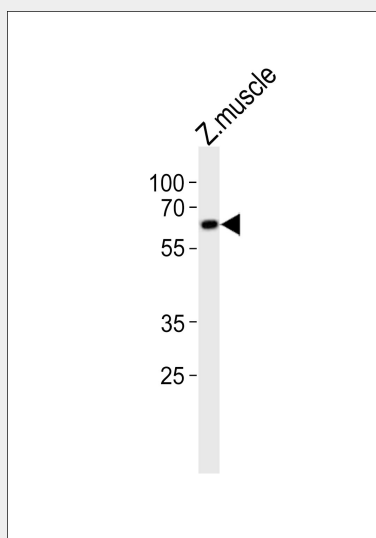
Cytoplasm, P-body. Note=Processing bodies (PB).

#### (DANRE) edc3 Antibody (Center) - Protocols

Provided below are standard protocols that you may find useful for product applications.

- [Western Blot](#)
- [Blocking Peptides](#)
- [Dot Blot](#)
- [Immunohistochemistry](#)
- [Immunofluorescence](#)
- [Immunoprecipitation](#)
- [Flow Cytometry](#)
- [Cell Culture](#)

#### (DANRE) edc3 Antibody (Center) - Images



Western blot analysis of lysate from zebra fish muscle tissue lysate, using (DANRE) edc3 Antibody (Center)(Cat. #Azb18719a). Azb18719a was diluted at 1:1000. A goat anti-rabbit IgG H&L(HRP) at 1:10000 dilution was used as the secondary antibody. Lysate at 20ug.

#### (DANRE) edc3 Antibody (Center) - Background

Binds single-stranded RNA. In the process of mRNA degradation, may play a role in mRNA decapping (By similarity).

#### (DANRE) edc3 Antibody (Center) - References

Lemeer S.,et al.J. Proteome Res. 7:1555-1564(2008).